

Next-door neighbor of
P.E. Keibler family

Tues., Sept. 28, 1943.

Julius Nolte Dies At 64; Circuit Judge 15 Years

Julius R. Nolte, 64, a judge of the circuit court of St. Louis County for 15 years, died early today at Deaconess Hospital after a three-week illness.

He entered the hospital a week ago suffering from complications due to a kidney ailment for which he had been treated several years. During the first week of his illness Judge Nolte refused to absent himself from his duties on the bench.

The funeral has been set tentatively for Thursday at 2:30 p. m. in the Louis H. Bopp undertaking establishment, Hanley rd. and Forsythe blvd., Clayton. Judge Nolte resided at 307 N. Bemiston av., Clayton.

Survivors include his widow, Mrs. Julia Wilson Nolte, and a sister, Mrs. Ruth Couch of Flat River, Mo.

Term Ran to 1947.

Judge Nolte, who had served as circuit judge since 1928, was elected the third time in 1940, and his term would have expired December 31, 1946.

Circuit Judge John A. Witthaus commented: "I cannot pay a tribute to my colleague that would be worthy of him. He was a man loved by everyone who knew him. His conduct on the bench will remain a constant pattern."

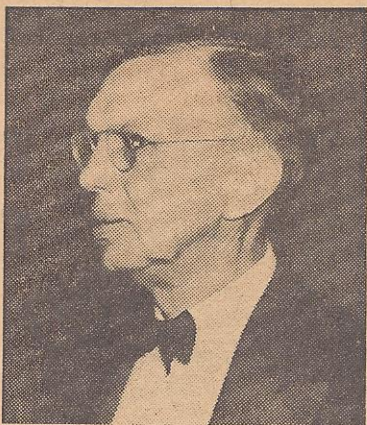
Judge Nolte, son of Robert and Josephine Nolte, was born at Black Jack in northern St. Louis County. He attended Kirkwood High School, Southeast Missouri Teachers' College at Cape Girardeau, and was graduated from St. Louis Law School. He was admitted to the bar in 1906.

Mayor Of Clayton In 1920.

He was deputy circuit clerk from 1903 to 1906, first assistant prosecuting attorney, St. Louis County, in 1908-09, and was mayor of Clayton in 1920-21. He was nominated as Republican candidate for circuit judge in August, 1928, and was appointed special circuit judge by Gov. Baker in October, to serve in the place of Judge Kiskaddon, who was ill. He was elected to succeed Kiskaddon in November, 1928.

The St. Louis Bar Association several times asked Judge Nolte for permission to offer his name to fill a vacancy on the U. S. Supreme Court, but he always refused.

Judge Nolte presided at the trials



Circuit Judge Julius R. Nolte.

of Angelo Rosegrant and Felix McDonald for the kidnaping of Dr. I. D. Kelley in 1931, Rosegrant receiving a prison sentence of 20 years and McDonald, 60 years.

In one of Judge Nolte's recent cases, Robert Nash, on May 14, received a life sentence for the ax-murder of his mother.

Judge Nolte was a member of the Masonic Lodge, Clayton, and an honorary member of the Clayton Rotary Club.